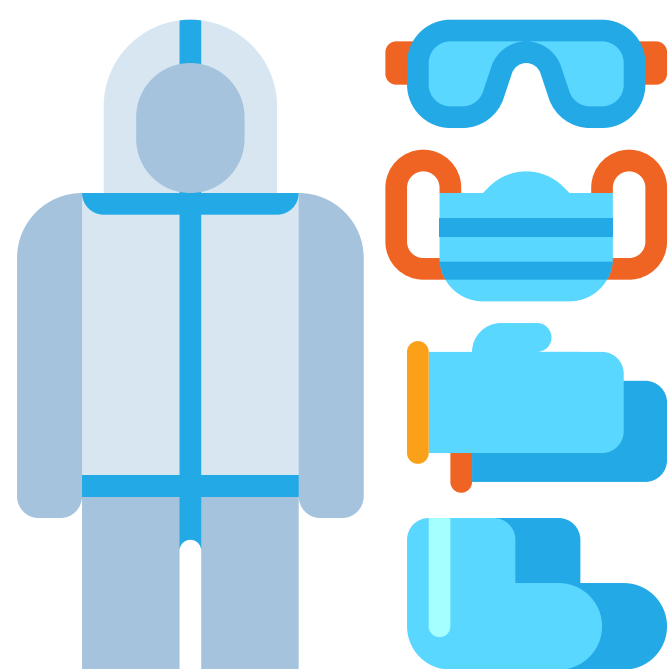


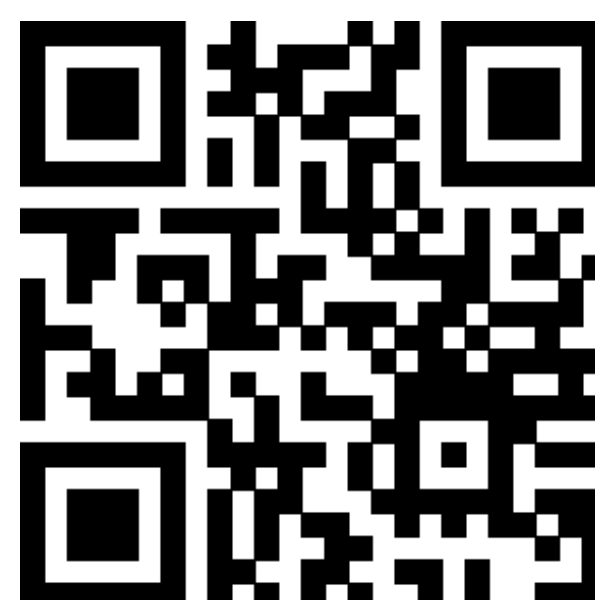


Hurricane Helene Relief & Recovery Resources provided by the NC Agromedicine Institute



Hurricane Helene WNC Farm Clean Up PPE Request Form

Use this form to request Personal Protective Equipment (PPE) for farm clean up efforts. This service is provided in partnership with Appalachian Regional Healthcare. **Complete request form URL: go.ncsu.edu/wncfarmppe**



Specialty crop farms can receive up to \$4,500* to make health and safety improvements, including field sanitation, fee-for-service to clean/sanitize work sites and/or transportation, generators, & more!



Cost-share program application & eligibility URL: go.ncsu.edu/hassc



For more grant information and contact, visit URL: go.ncsu.edu/mhic

Farms with migrant farmworkers can benefit from enhanced internet connectivity and receive up to \$1,000/migrant housing unit for the purchase of devices like hotspots, routers, modems & antennas, service set-up fees, service payments, and more!



**NC Farm Help Line
844.325.3276**

The **Farm and Ranch Stress Assistance Network of NC (FRSAN-NC)** provides support services to agricultural communities. Call the NC Farm Help Line to connect with resources including mental, financial, legal, Cooperative Extension, farm safety & health, and other services available to farmers, farmworkers, farm families, and others in the agricultural community. **Available 24/7!** Farmers and ranchers can also access mental health counseling and related services. Costs can be fully covered if using a participating provider. We'll help you find a provider with agricultural experience and training to meet your needs. **To fill out an intake form for counseling services affiliated with FRSAN-NC, scan the QR code (left) or visit the URL: go.ecu.edu/FarmStressCounseling**

